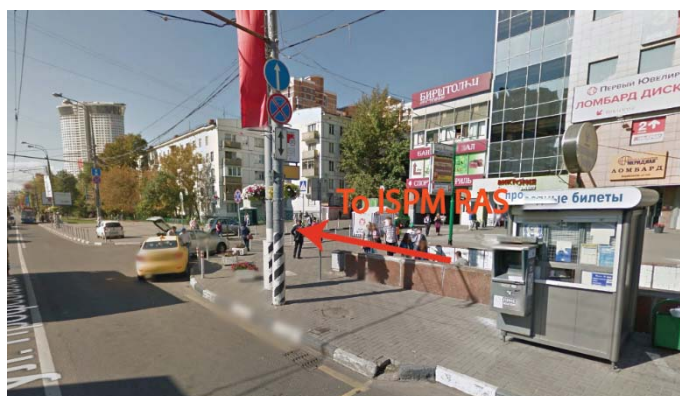
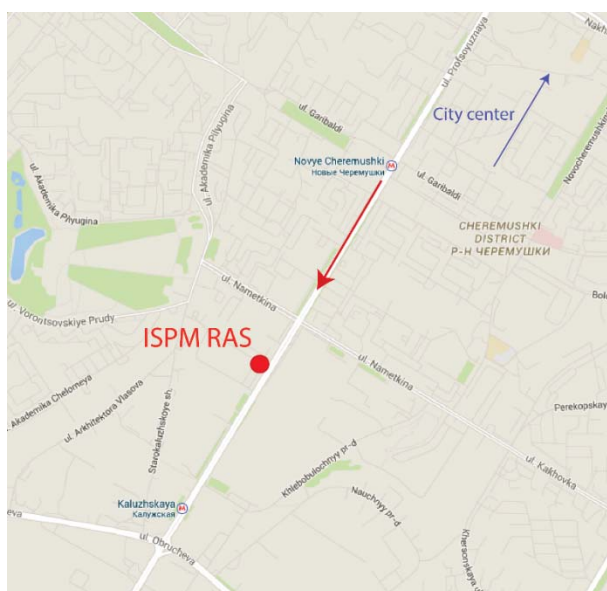


How to reach the meeting point (ISPM RAS)

The fastest way to reach the city from the airports (**Sheremetevo**, **Vnukovo** or **Domodedovo**) is Aero Express. The tickets and timetables are available online at <https://aeroexpress.ru/en/>. One-way ticket costs 420 rubles (6 euro) per person. Depending on the airport, the Express will arrive at one of the Train Terminals in the city center (**Belorussky**, **Kievsky** or **Paveletsky**). All these Terminals are located on the **Brown Line (circle)** of the Moscow Underground

The meeting point is located near the **Novye Cheremushki** Underground station (**Orange Line**, south-west of the city). The underground scheme can be found at http://engl.mosmetro.ru/pages/page_0.php?id_page=4.

One trip costs 50 rub (0.7 euro). From **Novye Cheremushki** station (marked with **M**) you can walk to ISPM RAS in approx. 10 min (see the map below). The right exit from the Station is a head of a train from the City center, then turn right, then turn left.



Street panorama around **Novye Cheremushki** station

Address: Moscow, Profsoyuznaya street, 70.

A shuttle to the Conference Venue will leave from ISPM RAS at 4 p.m on Sunday, September 20.

The registration will be open at the same place from 12 a.m.

Please don't hesitate to contact organizers during your stay in Russia by phone:

+7-915-076-3704 (Alexey Sizov)

+7-916-126-1365 (Elena Agina)

We are looking forward to see you on IFSOE!